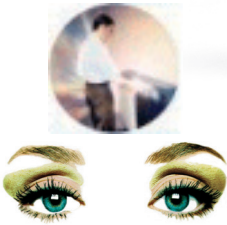


VIDAR ATLAS 25

WIDE FORMAT COLOR SCANNERS



ATLAS 25" - Model BASE and PLUS

Wide Format Color Scanners

SCANNING

- Photo-realistic vivid colors
- Crisp, clear black-and-white
- All-Wheel-Drive with contour adjustment
- Thick originals – up to 0.6"
- Flexible connectivity - USB and SCSI
- 3C Automatic Maintenance System

COPYING

- Color matching to printer & media
- Perfect reproduction of grayshades
- Built-in Basic calibration – black-and-white points
- Built-in Precision Color calibration

ATLAS 25"

The Vidar ATLAS 25" wide-format color scanners incorporate the latest in imaging technology for high-quality full color scanning and copying.

These compact scanners will fit in any office and are perfect devices for creating in-house graphics and impressive presentations right off the desktop. Now graphics and designer firms can scan and copy full sized prototypes for packaging, advertisements and trade show decorations.

This scanner is the right investment for Sign Companies, Pre-press shops, Photo Labs, Copy shops, POP/Exhibit/Display Providers, Architect and Engineer offices.

 The Image of Reliability.

VIDAR
systems corporation
www.vidar.com

ATLAS 25" – Wide Format Color Scanners

SCANNING SUPERIORITY

The versatile ATLAS 25" scanners create images in photo-realistic colors, high-quality grayscale and crisp, clear black-and-white. Color is captured at 36 bits for maximum color precision, passing the best 24 bits of color data to the computer to enhance color fidelity. The ATLAS uses All-Digital cameras with advanced point-of-origin color capture and on-board digital conversion ensuring minimum noise and an extended dynamic range. Quality color matched fluorescent lamps ensure the market's highest standards for color correctness.

The ATLAS can scan up to 0.6-inch (15mm.) thick originals such as posters mounted on foamboards, gatorboards etc.

ONE TOUCH SCANNING

The ATLAS 25' operator's panel is designed with convenient programmable action buttons for initiating common tasks directly from the scanner.

CARE FOR YOUR ORIGINAL

The All-Wheel-Drive with contour adjustment and precision rollers ensures a perfectly straight scanning path without using unnecessary force so you avoid both image distortion and damage to your customer's fragile originals.

Dual shared axels synchronize roller movement to ensure a straight and stable scan path. Suspension components apply pressure evenly across the whole width of the document for an optimal yet delicate hold. The roller's soft-friction contact surface adds the final touch to a system that cares for your original and for your scan results.

IMAGE ENHANCEMENT POWER

The ATLAS 25' on-board real time color correction and 2D-filters for color sharpening, softening and blur provide superior results with a wide variety of input images. The ATLAS 25" supports the latest in monochrome scanning technology with Dual 2D-Adaptive enhancement that works simultaneously on foreground, background, edges and other individual aspects of the original so you produce clean, crisp scans even from poor quality drawings. Dual 2D-Adaptive processing is the only pixel level cleanup of its kind in the industry today.

All processing is embedded in the hardware enabling you to perform powerful image enhancement without overhead and at speeds incomparable to standard software processing.

COPYING MADE EASY

Connect an ATLAS 25" scanner with a 25" large-format printer and you get the perfect large format color and monochrome digital copier.

With the scanner's high precision of details and colors, users can enlarge their creations to full display sizes without losing quality.

Dual 2D-Adaptive enhancement and ADL+ error diffusion halftoning produce reliable copies of drawings and photos in which even subtle differences between shades of gray are maintained in the printed output.

FLEXIBLE CONNECTIVITY

ATLAS 25" scanners let you fit the connection to your immediate needs by offering two interface options - the convenient Plug and Play (PnP) USB connection and the ultra fast industry standard SCSI interface. With the USB interface you can get your scanner running with plug-and-play ease and share the scanner between users and computers without installing extra hardware. The SCSI interface provides a highly effective connection for high volume color scanning.

Vidar scanners protect your investment with support for STI (Still Image Interface) ensuring problem-free compatibility with current and future versions of Windows.

PRECISION COLOR

A new wide format scanner may come calibrated from the factory, but as time goes by, components and lamps will change character and affect color output. With a Vidar scanner, your investment is fully protected and you need not worry about degradation. The unique Precision Color system lets you calibrate in the field at any time ensuring stable and predictable color output. The ATLAS 25" scanner is calibrated to both sRGB and NTSC color spaces using an ANSI IT8 calibration target. Furthermore, the automatic black-and-white point monitoring allows users to get an optimal dynamic range of color fidelity tailored to the actual scanned original.

AUTOMATIC SCANNER MAINTENANCE

The ATLAS 25" scanners incorporate the 3C Auto-Maintenance system that keeps the camera perfectly tuned and calibrated for optimal image quality. The process is automatic - just insert the maintenance sheet and click the wizard's start button. The 3C Auto-Maintenance system runs Basic-Calibration that sets black-and-white points on each individual pixel and ensures linearity in both highlight and shadow areas for noise-free and stable scans at all resolutions. Precision Color calibration completes the 3C Auto-maintenance system process.

Once the scanner has been fine-tuned, it performs a number of basic tasks on its own, removing those tedious chores required with other scanner systems. Using patented technology, black-and-white-points are constantly monitored and corrected while your scanner is running. Vidar scanners are designed to let you concentrate on your work and take optimal scanner performance for granted.

ADVANCED POWER MANAGEMENT

Running with the right internal temperature is of utmost importance when doing high-quality scanning through sensitive CCDs. The ATLAS 25" scanners have Advanced Power Management that rapidly brings the scanner to its optimal working temperature, after which the temperature is monitored and held at a minimum level ensuring low CCD noise. The Advanced Power Management system also lets users leave the scanner in low-power mode and program it to power up automatically before they arrive at work so the scanner is ready to scan right away.

Distributor:

Dealer:

VIDAR
systems corporation
www.vidar.com

ATLAS 25" – Wide Format Color Scanners

The two ATLAS 25" scanner models differ in performance and can be easily upgraded with new features for future requirements through the Smart-Card Upgrade Kit.

ATLAS 25" Wide Format Color Scanner Models		BASE	PLUS
Maximum Resolution:	(in dpi)	800	2400
Optical Resolution:	(in dpi)	424	424
Scan Accuracy:	0.1% ±1 pixel	√	√
Variable Resolution Setting:	from 50 dpi in one dpi increments	√	√
Scanning Speed inch/sec.:	(400 dpi turbo, 24-bit RGB)	0.5"/s	1.5"/s
	(400 dpi turbo, 8-bit Index)	1.5"/s	1.5"/s
	(400 dpi turbo, B/W)	3.0"/s	3.0"/s
Media Maximum Width:	28" (711 mm.)	√	√
Maximum Thickness:	0.6" (15 mm.)	√	√
Scan Width:	25" (635 mm.), Scan Length: not limited by scanner	√	√
Digital Image Processing embedded in hardware:	Dual 2D-Adaptive Enhancement	√	√
	Dual 2D-Adaptive Gray	√	√
	ADL+ Error Diffusion Halftoning	√	√
	2D-Sharpening, 2D-Softening and 2D-Blur Filter	√	√
	Color Feature Extraction	√	√
	2D-Adaptive Thresholding	√	√
Scan Modes:	24-bit color	√	√
	8-bit Feature extraction/Indexed color	√	√
	8-bit Graytone	√	√
	Copy modes with grayshades	√	√
	1-bit black-and-white	√	√
	B/W Dual 2D-Adaptive Modes	√	√
Color Adjustment:	3x3 matrix multiplier	√	√
	Independent RGB tone curves (Gamma)	√	√
	Independent black-and-white point setting	√	√
Color Space:	NTSC	√	√
	sRGB	√	√
3C Auto-Maintenance System:	Basic calibration	√	√
	Precision Color calibration	√	√
	Auto monitoring and correction (stitching, black-and-white point)	√	√
Sensors:	Single tri-linear color CCD	√	√
	10,680 pixels (RGB triplets)	√	√
	36 bits of color data capture	√	√
	12 bits of graytone data capture	√	√
	All-Digital camera	√	√
One Touch Scanning:		√	√
Advanced Power Manager:	Temperature control	√	√
	Low power mode	√	√
	Programmable power up timer	√	√
All-Wheel-Drive:	Contour adjustment	√	√
	Precision rollers	√	√
Light Source:	Color matched fluorescent lamps – Color Rendering Index (CRI) > 95	√	√
Optics:	Torsion stabilized for portability	√	√
Interface:	Ultrafast SCSI	√	√
	USB 1.1	√	√
	STI (Still Image Interface) support	√	√
Dimensions:	38.3" wide x 7.3" high x 18.3" deep (972 x 185 x 465 mm.), Weight: 40 kg	√	√
Power:	110/220/240V, 60/50cs, 180W	√	√
Interface board (Included)		√	√
WIDEsystem Kit (Included):	Drivers, Maintenance software, Maintenance sheet	√	√
Floor Stand (Optional):	Includes document basket	√	√
Thick Media Support Table (Optional):	Floor stand required	√	√
Host Platforms:	Windows 98, 98SE, ME, NT4, 2000, XP with SCSI	√	√
	Windows 98, 98SE, ME, 2000, XP with USB	√	√
	Power Macintosh	√	√

Distributor:

Dealer:

VIDAR
systems corporation
www.vidar.com