

XEROX®

Technology | Document Management | Consulting Services



print | copy | scan | fax | email

# Amazing versatility... with office colour power



# WorkCentre®

## 7228 / 7235 / 7245

One multi-tasking unit delivers the powerful features your business uses everyday: copying, network printing, email, fax, and scanning. This versatile Xerox multifunction system protects your data and produces exceptional print quality – in black and white or colour.

### Powerful features to support every office need

**This multifunction system provides the performance a document-intensive company needs to keep all of its workgroups up to speed and up-to-date.**

- All the traditional features of a robust black and white multifunction system – plus the benefit of colour.
- Tackle projects on multiple fronts. Users can simultaneously scan, print, copy, fax, and route files to their next destination to maximise productivity.

- Choose an array of fax tools and get cutting-edge features such as Fax Forward to Email. This feature not only offers you digital storage of faxed documents, it also provides a seamless way to integrate these documents into your digital workflows.
- Easily convert hard copy documents to electronic files and send them via email around the office or around the world.
- 1200 x 1200 dpi resolution and media sizes up to SRA3 deliver impressive quality for any office job.
- Remarkable print quality, subtle half-tones and clarity of fine lines thanks to our latest Emulsion Aggregate High Grade toner.

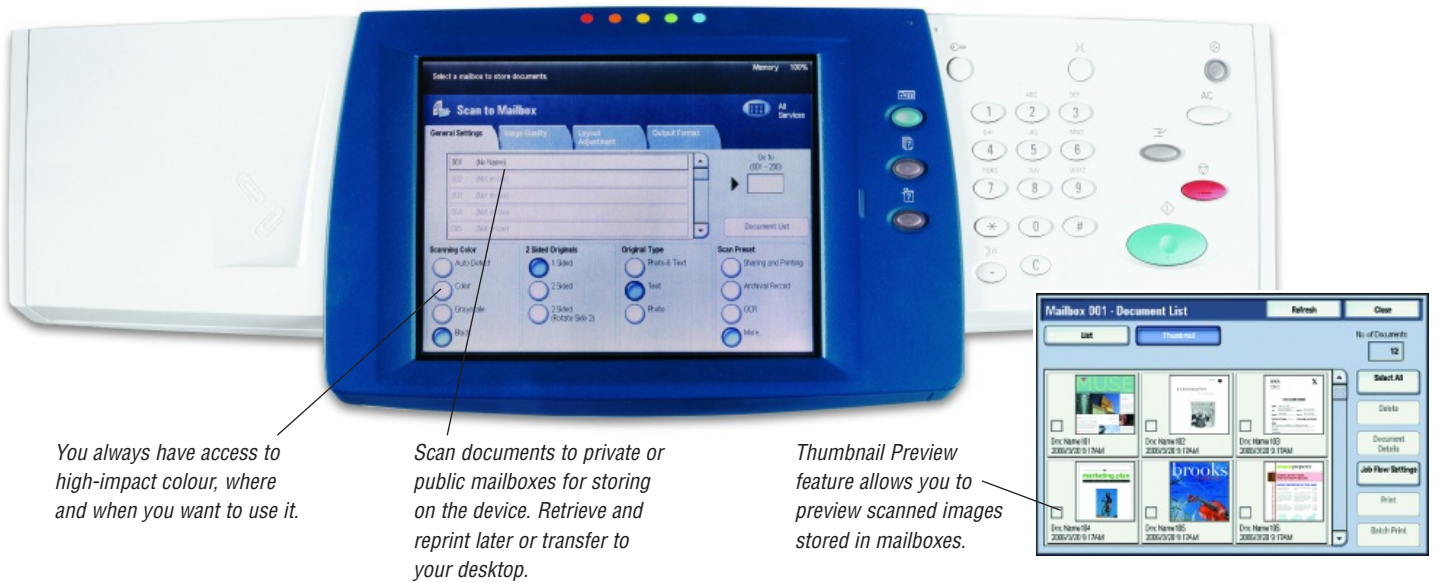


### Business benefits from colour

- *Colour can be a strategic advantage. Studies\* show that it dramatically increases motivation and response to sales messages, and that it makes businesses look more professional.*
- *Colour adds impact to critical documents. Key information is easier to locate when highlighted in colour and documents are read and remembered better.*

\*For more information about the power of colour, go to [www.xerox.com/office/latest/COLF5-01E.PDF](http://www.xerox.com/office/latest/COLF5-01E.PDF) and [www.xerox.com/office/latest/COLF5-02E.PDF](http://www.xerox.com/office/latest/COLF5-02E.PDF)

## Easy access to powerful features



You always have access to high-impact colour, where and when you want to use it.

Scan documents to private or public mailboxes for storing on the device. Retrieve and reprint later or transfer to your desktop.

Thumbnail Preview feature allows you to preview scanned images stored in mailboxes.

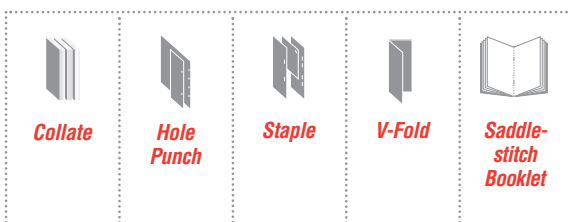
## Versatility to make your work easier

**The WorkCentre 7228 / 7235 / 7245 integrates smoothly and easily into your office. We've loaded it with scanning, throughput and finishing solutions that increase efficiency, save money, and create professional-looking documents.**

- Scan to desktop, network file server, document management system, template email, fax, or almost any other destination with high-quality, colour, grey scale, or black and white.
- Internet and email network capabilities allow instantaneous delivery worldwide – efficiently and inexpensively.
- SMARTsend™ software converts, distributes and routes scanned documents to wherever they're needed, in whatever format required.
- Scan and store colour documents as High Compressed PDF, optimising file size and image quality, and minimising network traffic.
- If you're printing or copying a lot, why keep reloading paper or switching media in the trays? Get the flexibility of five different input trays and up to 3,140-sheet capacity.
- Support for a wide range of media – from heavyweight (up to 220 gsm) to SRA3-sized paper.

## Versatile Finishing Options

Produce professional documents in-house quickly and easily. Our wide range of finishers eliminate the effort and expense of collating, folding and stapling by doing it for you.



**Office Finisher**  
multi-position stapling

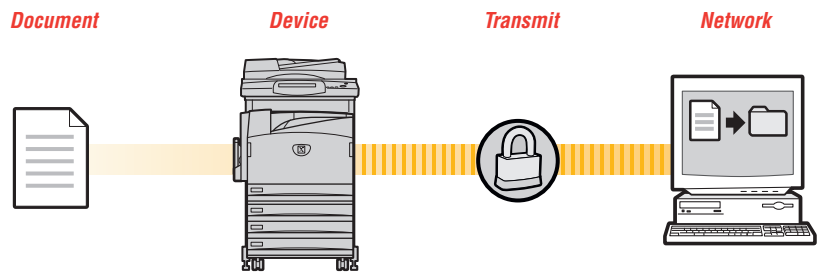
**Advanced Office Finisher**  
multi-position stapling,  
hole-punch

**Professional Finisher**  
multi-position stapling,  
hole-punch, booklet  
saddle-stitch, V-fold



## Security at all points

Xerox is committed to helping you meet your security needs. Our system, software and solutions are designed with features that allow you to control the level of security that is right for your office.



- Password Protected PDF
- Secure Watermark
- Secure Print
- Fax Security

- Image Overwrite
- Device Access Password Protection
- Encrypted Disk Drive
- Analogue Fax and Network Isolation
- Audit Log

- Encrypted Scan to Email
- Password Protected PDF

- Network Authentication

## Scaleable business solution

**Manage and monitor your network devices with ease. And keep all your data safe. Thanks to the modular WorkCentre design, you can upgrade to best meet the needs of your business.**

- Xerox CentreWare® Internet Services software simplifies installation and network administration and provides quick access to device and job status, accounting information and other operational metrics.
- Built-in Web pages allow you to manage, configure and troubleshoot from anywhere using a Web browser.
- For enterprise-level printer management, server-based CentreWare® Web makes it easy to install, configure, obtain reports and troubleshoot all network devices, regardless of manufacturer.

- SMart Kit™ technology predicts and prevents potential problems, enhancing device management and giving you more of what you need most: uptime.
- SMart eSolutions offers hands-free, hassle-free, secure administration of Xerox devices for automatic meter reads.
- Protect your hard copy with Secure Watermark and encrypt any job stored on the device's hard drive.
- Digitally safeguard transmissions of sensitive documents by fax or email, including encrypted scan to email and password protected PDF.
- LDAP authentication for accessing information directories. Network Authentication controls device access using common network architectures such as Kerberos and SMB.
- Image Overwrite protection electronically erases data stored on the hard drive during routine printing, scanning, copying or faxing, protecting your data.

## Powerful cost management solutions

- Access to colour options can be password-protected or granted to specific users or groups – you're in control of who uses it. Access to the entire device or specific functions can be limited by password or PIN.
- The Internal Auditor tracks usage of walk-up copy and print features.
- Xerox Standard Accounting (XSA) provides job-based accounting features for greater cost control of printing, copying, faxing and scanning.
- Usage reports can be downloaded from the device or over the network. These can be easily integrated with customised third-party accounting solutions.

WorkCentre® 7228 / 7235 / 7245



## Essential

Complete copying and exceptional network printing give your office the key functions you need.

## Versatile

Add more powerful features and additional functionality.

# Powerful office features

**COPY**

**PRINT**

**COLOUR**

- **Fast walkup copying** with performance features and two-sided capability.
- **Network printing** meets large workgroup requirements for speed, efficiency and security.
- **Strategic colour when you need it** – convenient and selectable on demand.

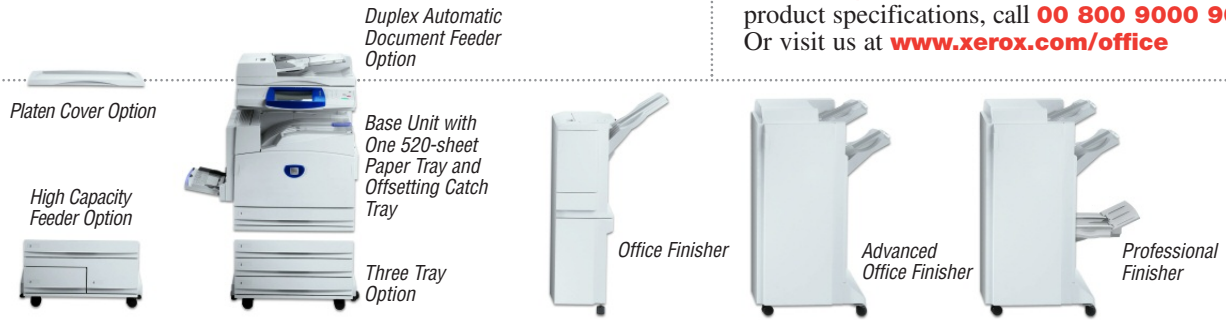
- **Add the power of scanning** to multiple destinations — including email, mailbox, PC Desktop, FTP and network servers — to streamline your workflow.
- **Internet fax, Walk-Up fax, network server fax** capabilities increase efficiency and decrease cost.

**SCAN**

**EMAIL**

**FAX**

**Call today.** For more information or detailed product specifications, call **00 800 9000 9090.** Or visit us at **www.xerox.com/office**



CONFIGURATIONS	WorkCentre® 7228	WorkCentre® 7235	WorkCentre® 7245
<b>Speed</b>	Up to 28 black and white / 26 ppm colour	Up to 35 black and white / 31 ppm colour	Up to 45 black and white / 35 ppm colour
<b>Duty Cycle</b>	Up to 135,000 images / month depending on model		
<b>Paper Handling</b>			
Paper Input	Standard <b>Bypass Tray:</b> 100-sheets; Size: 105 x 148 mm to SRA3 <b>Tray 1:</b> 520-sheets; Size: 139.7 x 182 mm to A3		
	Optional <b>75-sheet Duplex Automatic Document Feeder</b> <b>Three Tray Option (Total 2,180 sheets):</b> Adds three 520-sheet Paper Trays; Size: 139.7 x 182 mm to A3 <b>High Capacity Feeder (Total 3,140 sheets):</b> Adds one 520-sheet Paper Tray; Size: 139.7 x 182 to A3, one 800-sheet Tray and one 1,200-sheet Tray; Size: A4		
Paper Output	Standard 400-sheet Offsetting Centre Catch Tray (200 sheets with any Finisher option)		
	Optional <b>Office Finisher:</b> 1,000-sheet stacker, 50-sheet multi-position stapling <b>Advanced Office Finisher:</b> 3,000-sheet stacker and 500-sheet top tray, 50-sheet multi-position stapling and 2/4-hole punch <b>Professional Finisher:</b> 1,500-sheet stacker and 500-sheet top tray, 50-sheet multi-position stapling and 2/4-hole punch, saddle-stitch booklet maker, V-fold brochure maker		
<b>Security</b>	Fax Security, Secure Print, Image Overwrite Security, Secure Watermark, Scan to Email, password protected PDF, and Encrypted Disk Drive		
<b>Accounting</b>	Internal Auditron – Xerox Standard Accounting – Copy, Print, Fax, Scan; Optional Job Based Accounting (3rd Party)		
<b>Copy</b>			
Pre-Collation Memory	768 MB plus 40 GB hard drive		
First Page Out Time	As fast as 5.7 seconds black and white / 7.5 seconds colour		4.8 seconds black and white / 7.2 seconds colour
Copy Resolution	600 x 600 dpi		
Copy Features	Automatic two-sided, colour touch screen interface, electronic pre-collation, automatic tray selection; build job, negative/mirror image, automatic booklet creation, multi-up, auto RE, mixed-size originals, auto registration, covers insertion, sample set, bound copying, store and recall job programming, annotation, auto colour selection, area designation, poster mode, watermark		
<b>Print</b>			
Processor / PDL	600 MHz / Adobe® PostScript® 3™, PCL 5c and PCL 6 emulations		
Connectivity	10/100 BaseT Ethernet, 10Base2, 10Base5 (via adapter), USB (optional), Wireless Ethernet 802.11b (via third-party adapters)		
Print Resolution	600 x 600 x 8 dpi, 1200 x 1200 dpi		
Print Features	Secure print, delay print, sample set, booklet creation, cover selection, paper selection by attribute, multi-up, watermark, annotation, banner sheets, poster, fit to new paper size, transparency interleave, output tray selection, store and recall driver settings, colour balance and controls		
<b>Fax</b>	Optional Walk-Up Fax (one-line and three -line options), Network Server Fax, Internet Fax, LAN Fax		
Fax Features	Fax Forward to Email, Mailbox, Duplex Send and Receive, print on fax up to A3, Fax Build Job, Fax Bound Originals		
<b>Scan</b>	Optional Scan-to-Email, Scan to PC Desktop, Scan to Mailbox, Scan to FTP, Thumbnail Preview, Various Xerox Alliance Partner Solutions, SMARTsend		
Scan Features	PDF, High Compression PDF, JPEG, TIFF, Multi-page TIFF, Mixed Size Originals, Scan Build Job, Auto Colour		
<b>Other Options</b>	Foreign Device Interface, Media Card Reader		

## More integrated value-added solutions

**Flexible, open architecture allows easy integration with leading third-party software developers. An array of Xerox Alliance Partner solutions are available to enhance the functionality of your Xerox multifunction system, including:**

- Faxing. Integrate network fax capabilities, including desktop control, to increase your efficiency and save money.
- Accounting. Streamline and digitise processes such as billing, identify savings opportunities, find new sources of value and simplify work processes.
- Scanning. Provide digital safeguarding to allow scan and secure transmission of highly sensitive documents by fax or email.

